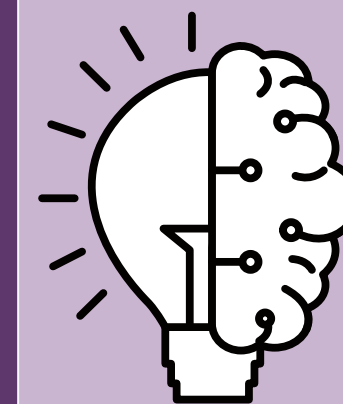
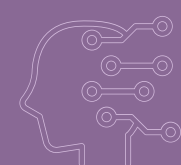


# AI is smart, not wise – that's where you come in



"Knowing others is intelligence; knowing yourself is true wisdom." – Lao Tzu



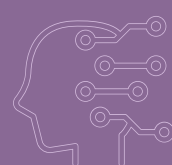
## Weak vs Strong AI

### Weak AI:

Excels at specific tasks  
Lacks real human understanding

### Strong AI:

Exhibits human-like intelligence and creativity  
Remains theoretical; not current reality



new AI tools

practise presentations

wider perspectives

learned the basics of Canva

organization skills

intercultural communication

## Prompt guidance

- structure
- role
- context



## Black Boxes

- lack of explainability in AI decisions
- lack of transparency and trust
- challenge in critical fields like healthcare, finance



## AI is promoting equality, diversity, and inclusion in HR

- can reinforce existing disparities
- identify and mitigate biases, promote hiring practices, ensure equitable treatment of employees

## Škoda

employee training by AI - correct behaviour in customer contact or behaviour in dangerous situations  
AI usage is necessary to keep competitiveness  
Development of an internal AI's

## AI is Smart – But Only Humans Are Wise

Artificial Intelligence can analyze data, automate tasks, and learn patterns.  
But it lacks intuition, ethics, and self-awareness – the core of human wisdom.

**AI will not replace humans 100%**  
**It will augment, not eliminate, the human role.**

**AI increases efficiency**  
**Whole foods: 70 % less fewer checkout steps via AI sensors**  
**Starbucks: 4 milion more loyalty members via AI.**